

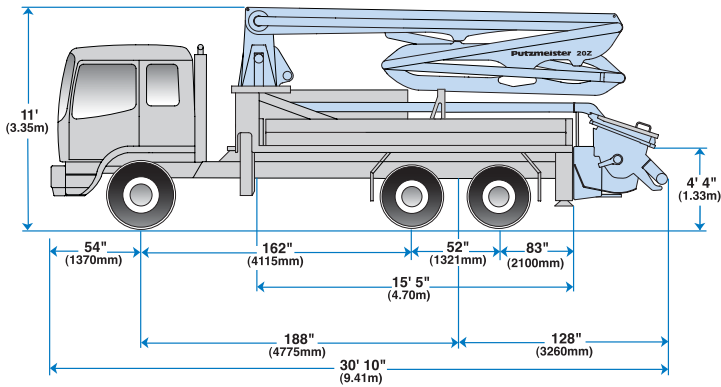
# 20Z-Meter

Truck-Mounted Concrete Boom Pump



20Z-Meter

- 63' 10" (19.46m) vertical reach
- Compact model for limited access sites
- Z-fold boom design
- Fold-out side panels for pipe storage



## 20Z-Meter Truck-Mounted Specifications

Based on Model GMC TT8500  
with .09 pump cell

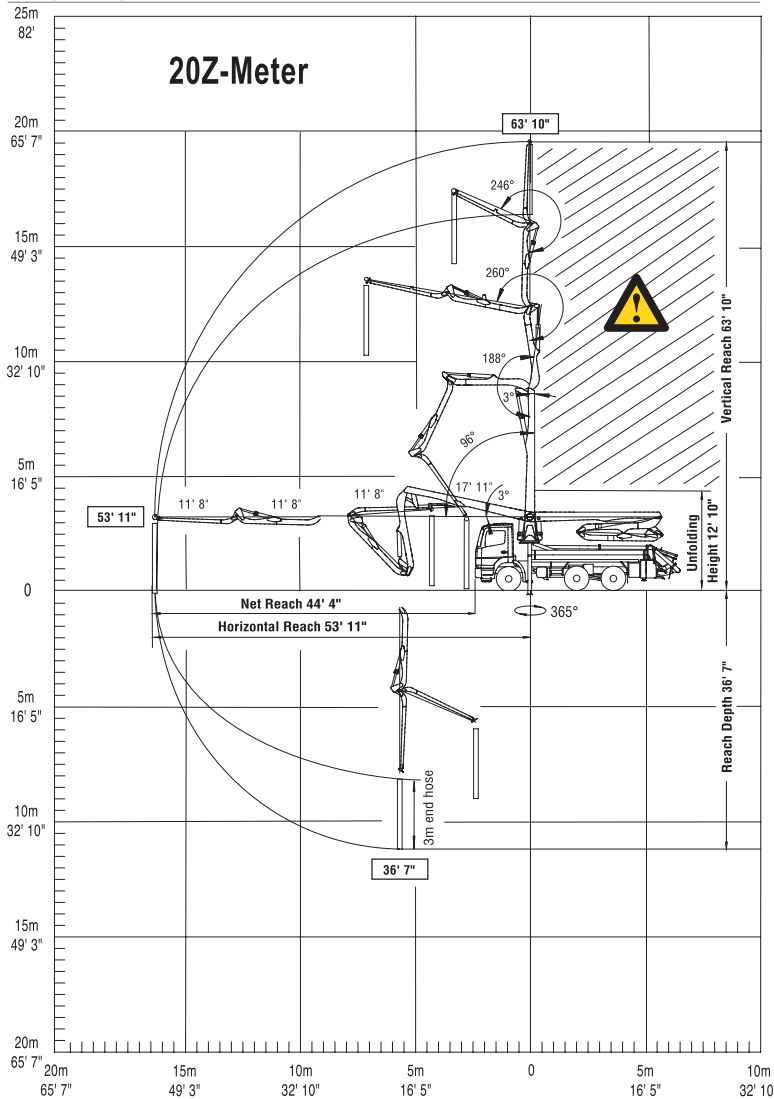
Length	30' 10"	(9.41m)
Width	8' 2"	(2.50m)
Height	11'	(3.35m)
Wheelbase	188"	(4,775mm)
Front axle weight	10,120 lbs	(4,590kg)
Rear axle weight	25,620 lbs	(11,621kg)
Approx. total weight	35,740 lbs	(16,211kg)

Weights are approximate and include pump, boom, truck, full hydraulic oil, driver and some fuel. Varies with options selected.

Dimensions will vary with different truck makes, models and specifications.

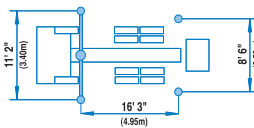
20Z-Meter

### Range Diagram



End hose not to be operated in caution area.

Photos and drawings are for illustrative purposes only.  
For available options, please refer to price list.



Authorized Distributor

### Boom Specifications • Z-Fold Design

#### Height & Reach

Vertical reach	63' 10"	(19.46m)
Horizontal reach	53' 11"	(16.43m)
Reach from front of truck*	44' 4"	(13.51m)
Reach depth	36' 7"	(11.15m)
Unfolding height	12' 10"	(3.91m)

#### 4-Section Boom

1st section articulation	96°
2nd section articulation	188°
3rd section articulation	260°
4th section articulation	246°

1st section length	17' 11"	(5.46m)
2nd section length	11' 8"	(3.56m)
3rd section length	11' 8"	(3.56m)
4th section length	11' 8"	(3.56m)

#### General Specs

Pipeline size (ID) metric ends	5"	(125mm)
Rotation	365°	
End hose — length**	10'	(3.00m)
End hose — diameter	5"	(125mm)
Outrigger spread L-R — front pull out & hydraulically extend down	11' 2"	(3.40m)
Outrigger spread L-R — rear hydraulically extend down	8' 6"	(2.59m)

### Pump Specifications

#### 20Z.09

Output — rod side	117 yd <sup>3</sup> /hr (90m <sup>3</sup> /hr)
piston side	78 yd <sup>3</sup> /hr (60m <sup>3</sup> /hr)
Pressure — rod side	1015 psi (70 bar)
piston side	1537 psi (106 bar) •
Concrete cylinder diameter	8" (200mm)
Stroke length	55" (1400mm)
Max strokes per minute —	
rod side	36
piston side	25
Volume control	0-Full
Vibrator	Standard
Hard-chromed concrete cylinder	Standard
Hydraulic system	Free Flow
Hydraulic system pressure	5075 psi (350 bar)
Differential cylinder diameter	4.3" (110mm)
Rod diameter	2.5" (63mm)
Maximum size aggregate	2.5" (63mm)
Water tank	172 gal (650L)

Maximum theoretical values listed.

- \* Applies to units mounted on PMA stock truck — GMC TT8500
- Standard delivery line system rated at max line pressure of 1233 psi (85 bar)
- \*\* Please follow the end hose weight guidelines listed in the operators manual.



Putzmeister America, Inc.  
1733 90th Street  
Sturtevant, WI 53177 USA  
Telephone (262) 886-3200  
(800) 884-7210  
Facsimile (262) 884-6338  
www.putzmeister.com

