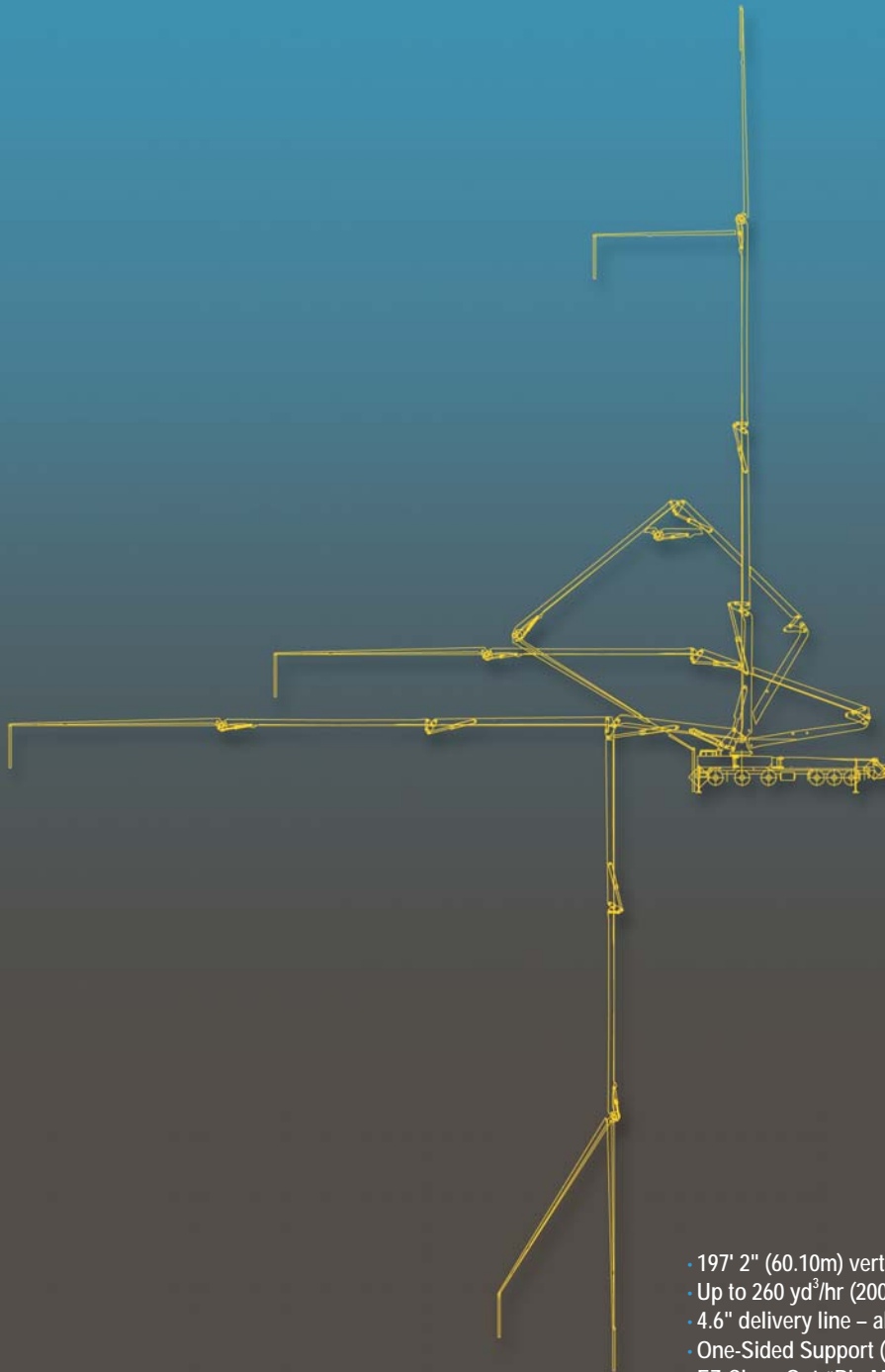


61-Meter

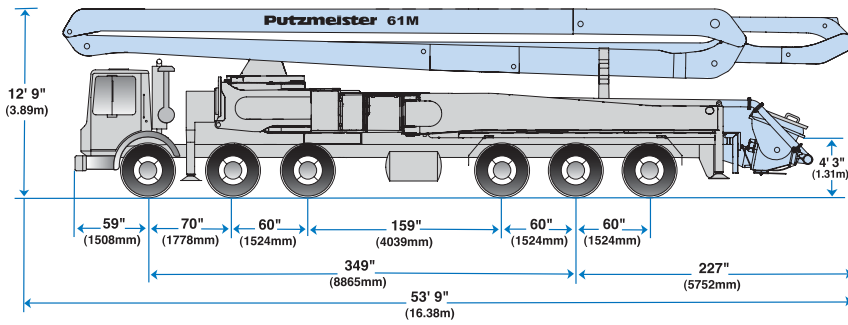
Truck-Mounted Concrete Boom Pump



61-Meter



- 197' 2" (60.10m) vertical reach
- Up to 260 yd³/hr (200m³/hr) maximum output
- 4.6" delivery line – all sections
- One-Sided Support (OSS) system
- EZ Clean Out "Big Mouth" RS 907L Hopper



61-Meter Truck-Mounted Specifications

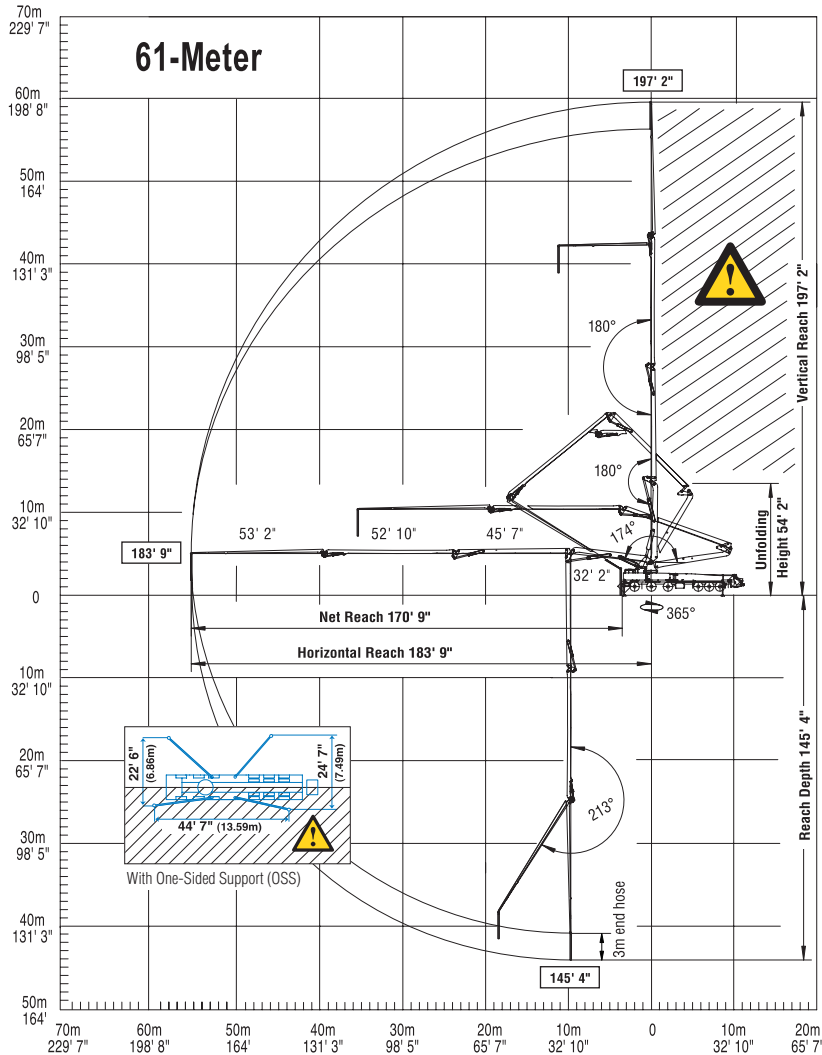
Based on Model MACK MR 688S with .16H pump cell

Length	53' 9"	(16.38m)
Width	8' 2"	(2.50m)
Height	12' 9"	(3.89m)
Wheelbase	349"	(8,865mm)
Front axle weight	57,175 lbs	(25,957kg)
Rear axle weight	56,810 lbs	(25,792kg)
Approx. total weight	113,985 lbs	(51,749kg)

Weights are approximate and include pump, boom, truck, full hydraulic oil, driver and some fuel. Varies with options selected.

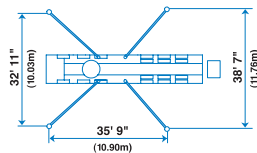
Dimensions will vary with different truck makes, models and specifications.

Range Diagram



End hose not to be operated in caution area.

Photos and drawings are for illustrative purposes only. For available options, please refer to price list.



Authorized Distributor

Boom Specifications • Roll-and-Fold Design

Height & Reach

Vertical reach	197' 2"	(60.10m)
Horizontal reach	183' 9"	(56.01m)
Reach from front of truck*	170' 9"	(52.05m)
Reach depth	145' 4"	(44.30m)
Unfolding height	54' 2"	(16.52m)

4-Section Boom

1st section articulation	174°
2nd section articulation	180°
3rd section articulation	180°
4th section articulation	213°
1st section length	32' 3" (10.57m)
2nd section length	45' 7" (13.89m)
3rd section length	52' 10" (16.10m)
4th section length	53' 2" (16.21m)

General Specs

Pipeline size (ID) metric ends	4.6"	(117mm)
Rotation	365°	
End hose — length (lightweight)	10'	(3m)
End hose — diameter	4.5"	(115mm)
Outrigger spread L-R — front swing out & telescope	32' 11"	(10.03m)
Outrigger spread L-R — rear swing-out	38' 7"	(11.76m)

Pump Specifications 61M.16H 61M.20H

Output — rod side	210 yd ³ /hr (160 m ³ /hr)	—
piston side	146 yd ³ /hr (112 m ³ /hr)	260 yd ³ /hr (200m ³ /hr)
Pressure — rod side	1233 psi (85 bar)	—
piston side	1885 psi * (130 bar)*	1233 psi (85 bar)
Concrete cylinder diameter	9" (230mm)	11" (280mm)
Stroke length	83" (2100mm)	83" (2100mm)
Max strokes per minute — rod side	31	—
piston side	21	26
Volume control	0-Full	0-Full
Vibrator	Standard	Standard
Hard-chromed concrete cylinder	Standard	Standard
Hydraulic system	Free Flow	Free Flow
Hydraulic system pressure	5075 psi (350 bar)	5075 psi (350 bar)
Differential cylinder diameter	5.5" (140mm)	5.5" (140mm)
Rod diameter	3.1" (80mm)	3.1" (80mm)
Maximum size aggregate	2.5" (63mm)	2.5" (63mm)
Water tank	172 gal (650L)	172 gal (650L)

Maximum theoretical values listed.

* Applies to units mounted on PMA stock truck — MACK MR 688S

• Standard delivery line system rated at max line pressure of 1233 psi (85 bar)



Putzmeister America
1733 90th Street
Sturtevant, WI 53177 USA
Telephone (262) 886-3200
(800) 884-7210
Facsimile (262) 884-6338
www.putzmeister.com

